



270 Longley Road, Chichester PO19 6EB

£285,000 Leasehold



2 Bedrooms



1 Bathroom



1 Reception Room

*Sw*

Sims Williams



## Key Features

- No Onward Chain
- Ground Floor Apartment
- Spacious Accommodation
- Open Plan Kitchen/Living
- Contemporary Fitted Kitchen
- 2 Double Bedrooms
- Stylish Shower Room
- Beautiful Communal Grounds
- Designated Parking Bay

## EPC Rating

Current = C

Potential = C

## Council Tax Band

Band = B

## Tenure - Leasehold

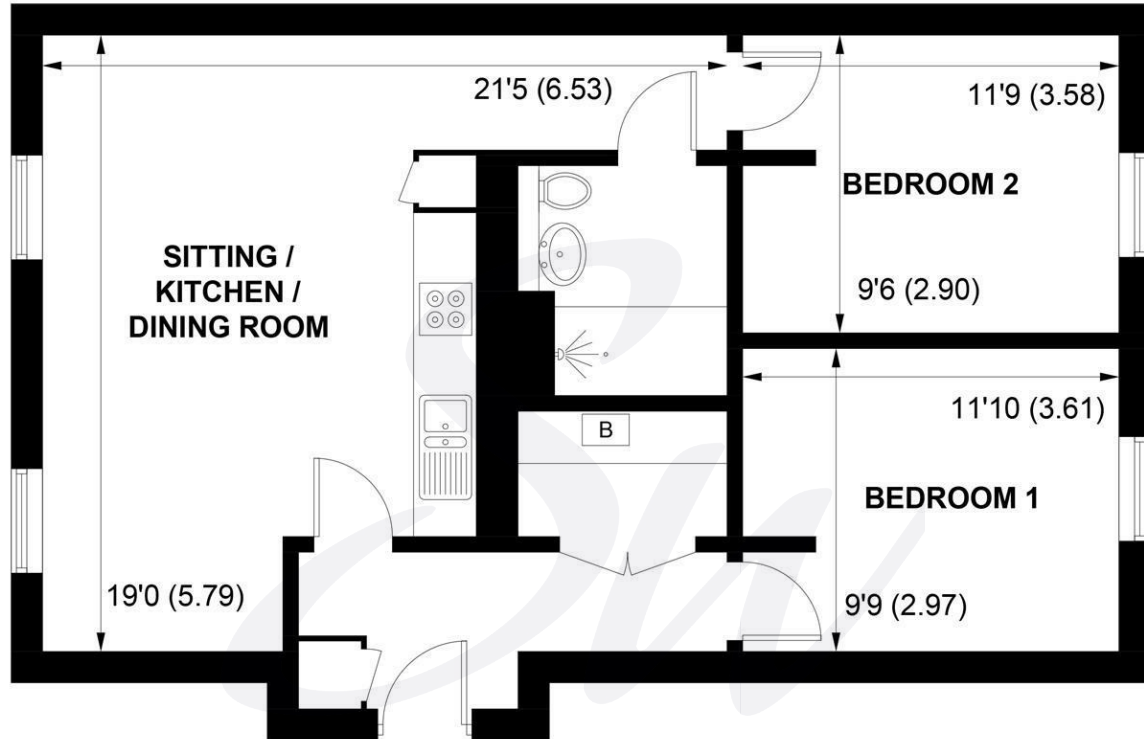
Length of Lease: 150 years

Years Remaining: 135 years

Ground Rent: £0.00

Service Charge: £1,320.00 p.a.





## GROUND FLOOR

APPROXIMATE GROSS INTERNAL AREA = 668 SQ FT / 62.1 SQ M

NOT TO SCALE (For illustrative purposes only as defined by RICS Code of Measuring Practice) 2025 ©

Produced for Sims Williams



[simswilliams.co.uk](http://simswilliams.co.uk)

#### CHICHESTER

---

8-9 Southgate

Sales 01243 787868

Lettings 01243 836055

[chichester@simswilliams.co.uk](mailto:chichester@simswilliams.co.uk)

#### WALBERTON

---

5 Maple Parade

Sales 01243 551368

Lettings 01243 836055

[walberton@simswilliams.co.uk](mailto:walberton@simswilliams.co.uk)

#### ARUNDEL

---

8a High Street

Sales 01903 885678

Lettings 01903 881133

[arundel@simswilliams.co.uk](mailto:arundel@simswilliams.co.uk)

#### BOGNOR REGIS

---

46 High Street

Sales 01243 862626

Lettings 01243 836055

[bognor-regis@simswilliams.co.uk](mailto:bognor-regis@simswilliams.co.uk)

Viewing Strictly by arrangement via the vendor's agent Sims Williams 01243 787868. These particulars are believed to be correct but their accuracy is not guaranteed and they do not form part of any contract.